



PUSH-N-LOCK HDPE PIPING SYSTEMS TECHNICAL BROCHURE



farmland_ckm@yahoo.com



+91 7338033790



www.rainyfilters.com

TABLE OF CONTENTS

INTRODUCTION – THE PUSH-N-LOCK HDPE PIPING SYSTEM	PAGE 03
KEY FEATURES AND ADVANTAGES	PAGE 04
ADVANTAGES OVER PVC PIPES	PAGE 05
PRODUCT RANGE	PAGE 06 - 15
QUALITY CONTROL PROCEDURES	PAGE 16



INTRODUCTION - THE PUSH-N-LOCK HDPE PIPING SYSTEM

HDPE Pipes have, over the decades proven their capabilities as the ideal form of piping for various water management applications.

However, there have been very few jointing techniques which offer an easy yet robust installation experience.

We have developed a HDPE Push-N-Lock Type interlocking coupling system, with an union, offering a simple yet firm connection.

Along with the pipes which are having a standard length of 6 meters, we are also manufacturing push-n-lock type tees, bends, reducers, end plugs to complete the range.

The pipes and fittings are manufactured using HDPE resin, Grey master batch and UV stabilizer additives to increase the life of the pipes, fittings and the overall system.

To keep the joints leakproof, we have designed the sealing rings using rubber and polypropylene.



INNOVATION IN HDPE PIPING INDUSTRY

- Manufactured using 100% virgin High Density Polyethylene granules
- Usage of UV Stabilized masterbatch for ensuring longevity of the pipes and fittings
- Unique design of push and lock (coupling mechanism), easy to establish leakproof connections

KEY FEATURES AND ADVANTAGES

HDPE pipes do not rust, rot or corrode. They are resistant to biological growth, which means an extended service life and long term cost savings.

With an outstanding resistance to fatigue, these piping systems are designed as well as pressure rated to handle the kind of occasional and recurring surge events that are common in water distribution systems.

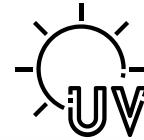
HDPE pipes have an estimated life of 50 years, depending on design and installation.

With a high level of impact resistance, even in temperatures as low as -40 °C, the pipelines remain intact despite every possible mechanical influence.

Another notable point is the hydraulically optimized geometry of the fittings which ensure a higher discharge capacity, along with economical dimensioning of the pipeline.

Owing to the addition of UV Stabilizers, these pipes and fittings are well protected from the ultraviolet rays of the sun, which would otherwise shorten the lifespan of the systems.

The RAINY PUSH-N-LOCK HDPE PIPING SYSTEM, a patented range of pipes and fittings, with its unique design allows installations to be conducted seamlessly.



High UV Resistance



High level of impact resistance



Simple installation



ADVANTAGES OVER PVC PIPES



PUSH-N-LOCK HDPE PIPING

PVC PIPING



Highly protected against Ultraviolet Rays of the sun. Long life ensured



Unprotected from the Ultraviolet Rays of the sun. Becomes brittle with time owing to exposure



Easy to install. Every pipe and fittings has push-and-lock couplers on both ends.



Installation is done by joining pipes and fittings using adhesives, which take longer time, increasing installation costs.



High level of impact resistance to external mechanical forces and internal surge pressure.



Extremely prone to cracking under minimal external force, and internal surge pressure.

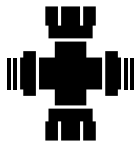


Joints are strong, owing to uniqueness in design of the coupling system



Pipes and fittings are joined using industrial adhesives, unable to withstand surge pressure

AND MANY MORE



PRODUCT RANGE

OVERVIEW



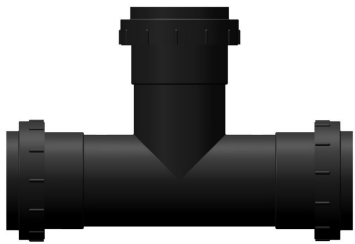
RAINY RWH PUSH-N-LOCK
HDPE Pipe



RAINY RWH PUSH-N-LOCK
HDPE 45 DEGREE BEND



RAINY RWH PUSH-N-LOCK
HDPE 90 DEGREE BEND



RAINY RWH PUSH-N-LOCK
HDPE TEE



RAINY RWH PUSH-N-LOCK
HDPE REDUCER



RAINY RWH PUSH-N-LOCK
HDPE DOOR BEND



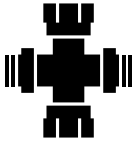
RAINY RWH PUSH-N-LOCK
HDPE DOOR TEE



RAINY RWH PUSH-N-LOCK
HDPE SOCKET COUPLER



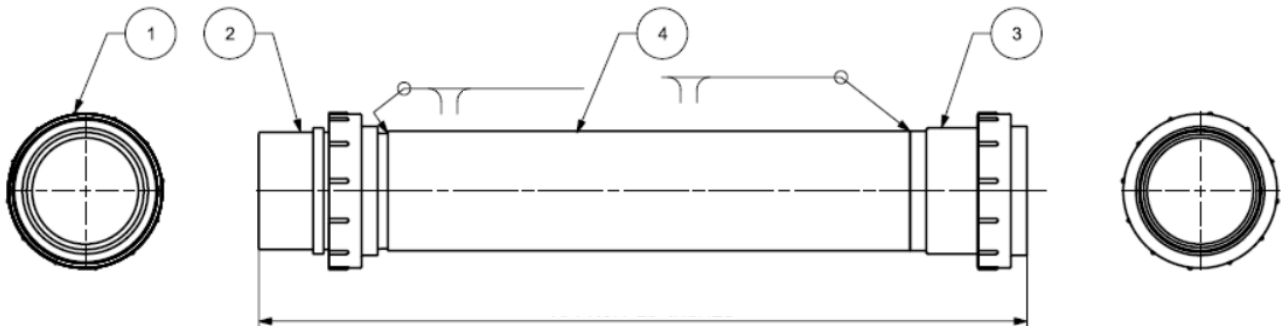
RAINY RWH PUSH-N-LOCK
HDPE END CAP



RAINY RWH PUSH-N-LOCK HDPE Pipe



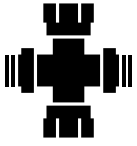
Note - The picture is a sample pipe of 1 ft. Actual lengths as indicated in the table captioned - "Length of Pipe"



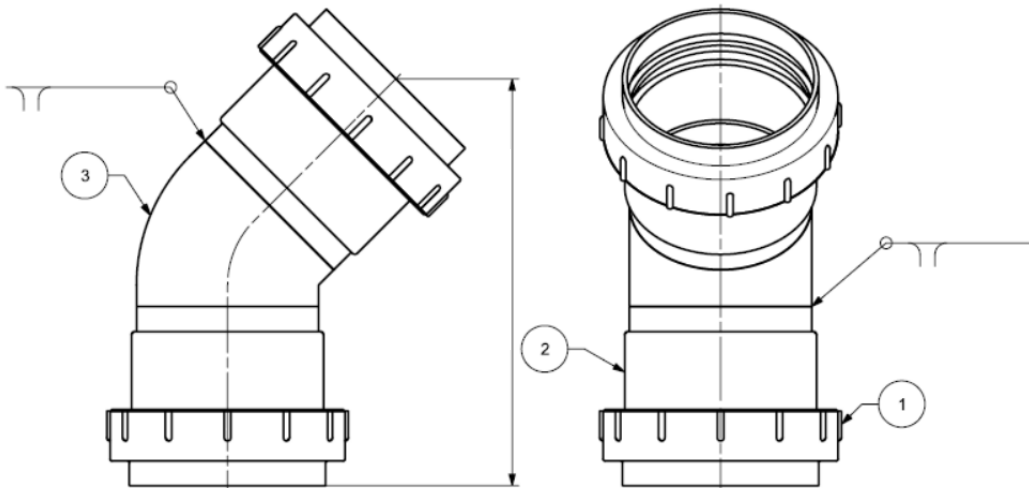
Sizes (Outer diameter)
75 mm
90 mm
110 mm

Pressure Withstanding Capacity
6.0 Kg/sq.cm

Length of Pipe
3 m
6 m



RAINY RWH PUSH-N-LOCK HDPE 45 DEGREE BEND



Sizes (Outer diameter)

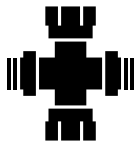
75 mm

90 mm

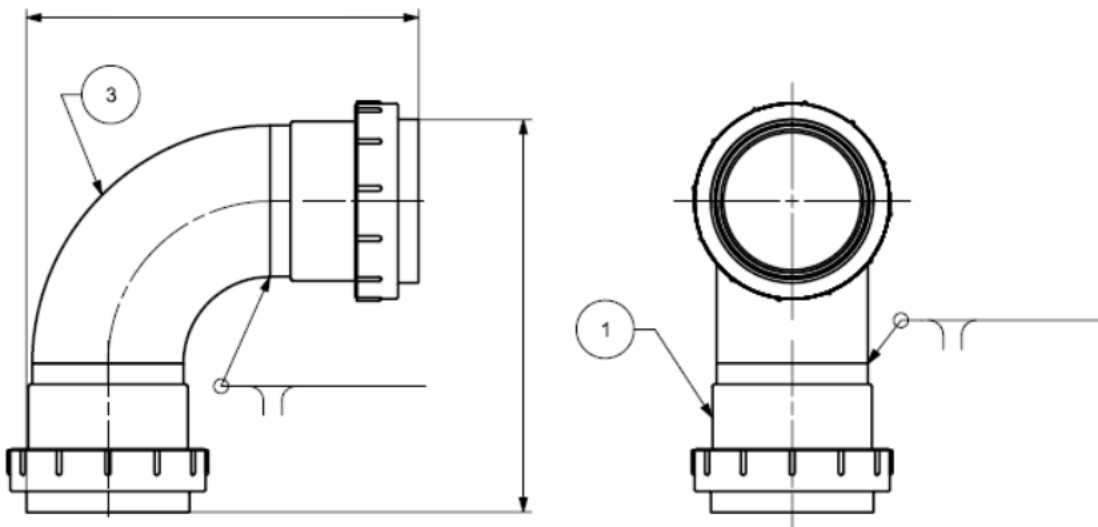
110 mm

Pressure Withstanding Capacity

6.0 Kg/sq.cm

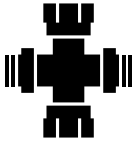


RAINY RWH PUSH-N-LOCK HDPE 90 DEGREE BEND

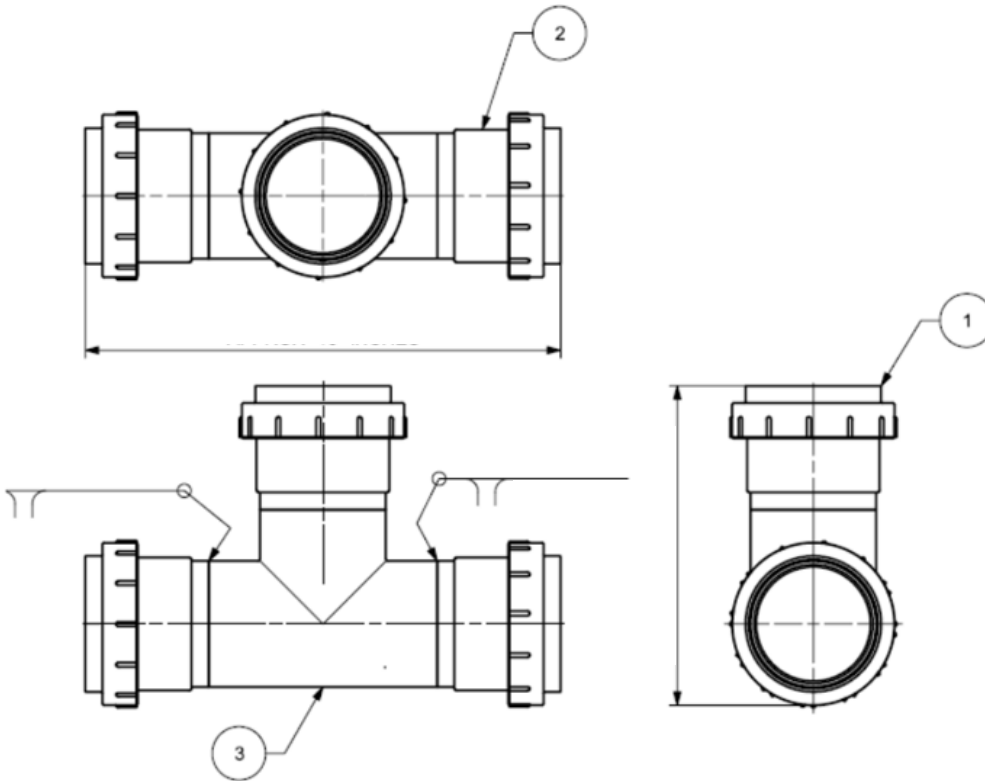
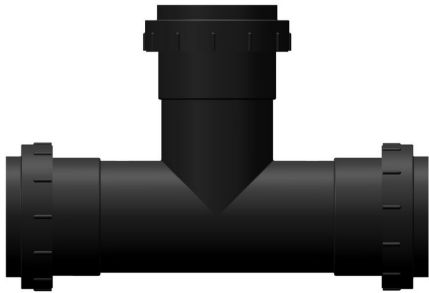


Sizes (Outer diameter)
75 mm
90 mm
110 mm

Pressure Withstanding Capacity
6.0 Kg/sq.cm

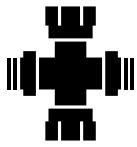


RAINY RWH PUSH-N-LOCK HDPE TEE



Sizes (Outer diameter)
75 mm
90 mm
110 mm

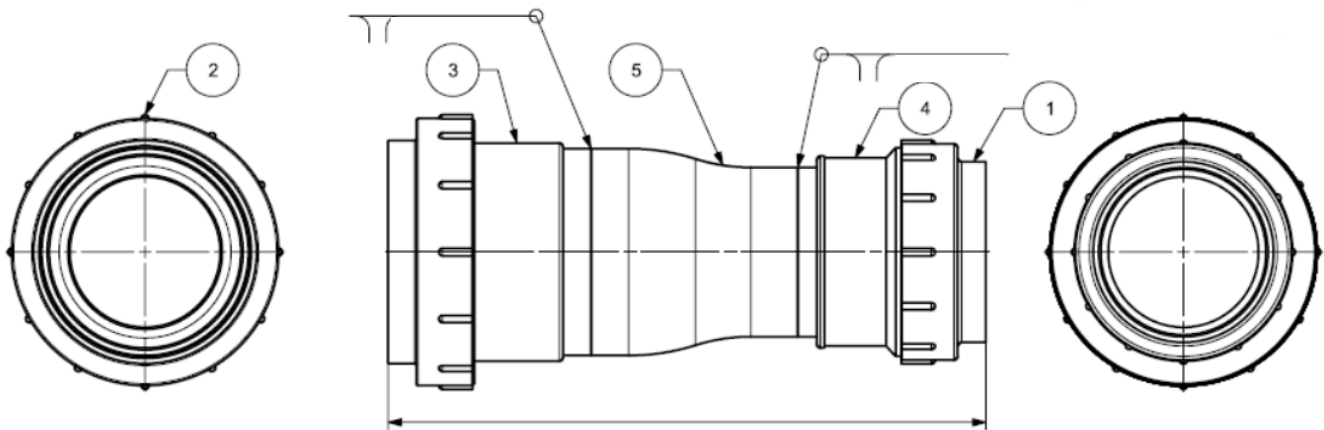
Pressure Withstanding Capacity
6.0 Kg/sq.cm



PRODUCT RANGE



RAINY RWH PUSH-N-LOCK HDPE REDUCER



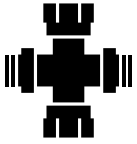
Sizes (Outer diameter)

110 > 90 mm

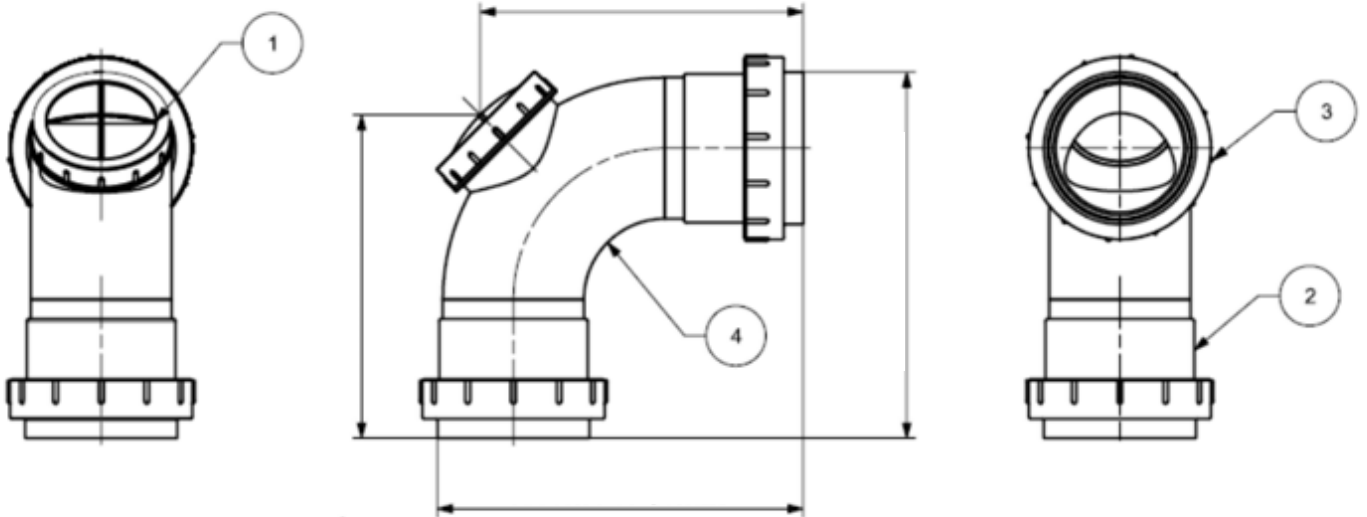
90 mm > 75 mm

Pressure Withstanding Capacity

6.0 Kg/sq.cm

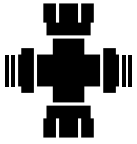


RAINY RWH PUSH-N-LOCK HDPE DOOR BEND

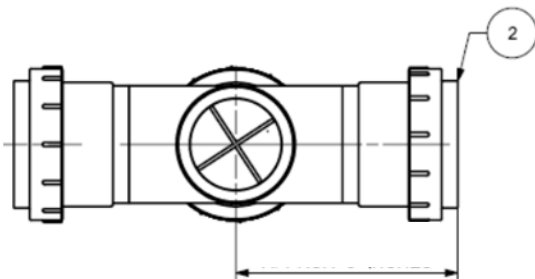
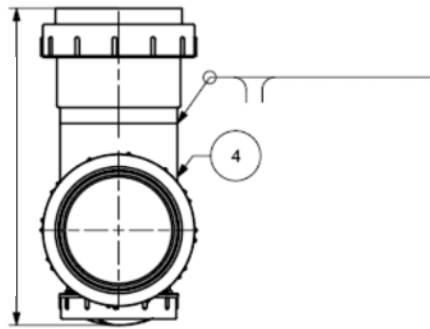
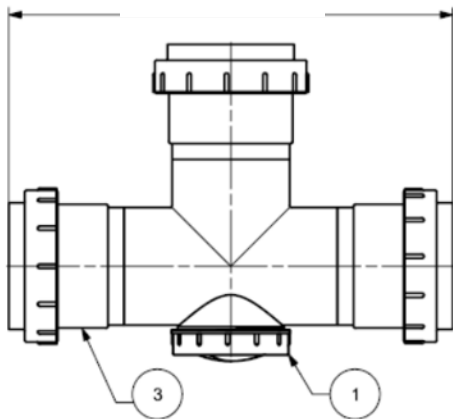
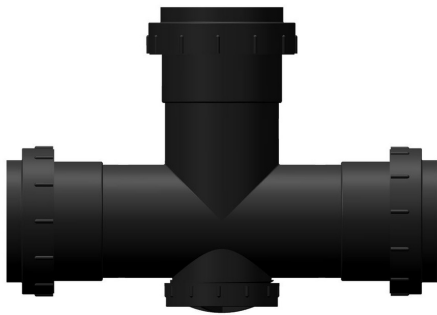


Sizes (Outer diameter)
75 mm
90 mm
110 mm

Pressure Withstanding Capacity
6.0 Kg/sq.cm



RAINY RWH PUSH-N-LOCK HDPE DOOR TEE



Sizes (Outer diameter)

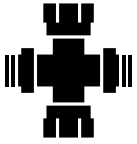
75 mm

90 mm

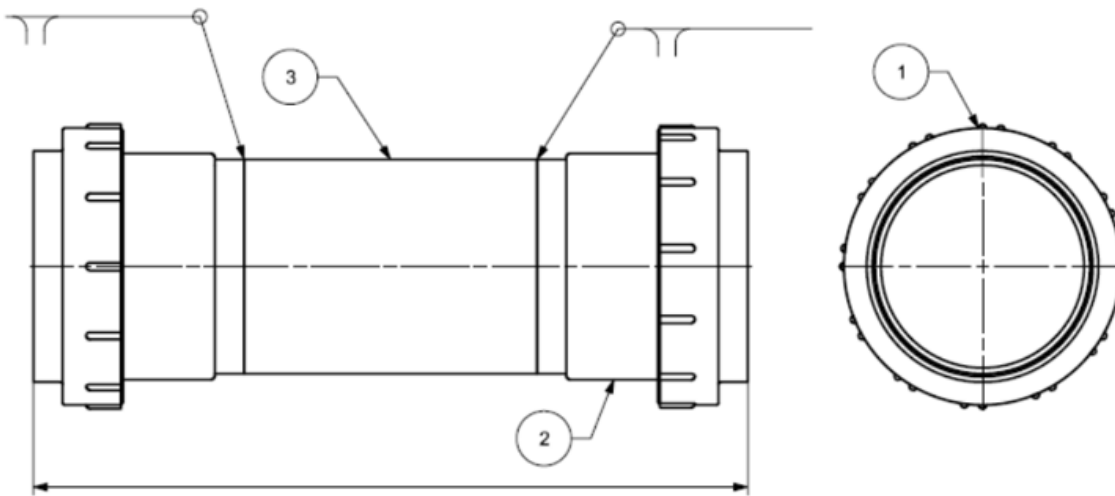
110 mm

Pressure Withstanding Capacity

6.0 Kg/sq.cm

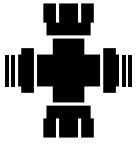


RAINY RWH PUSH-N-LOCK HDPE SOCKET COUPLER

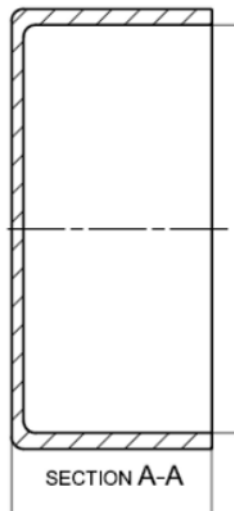
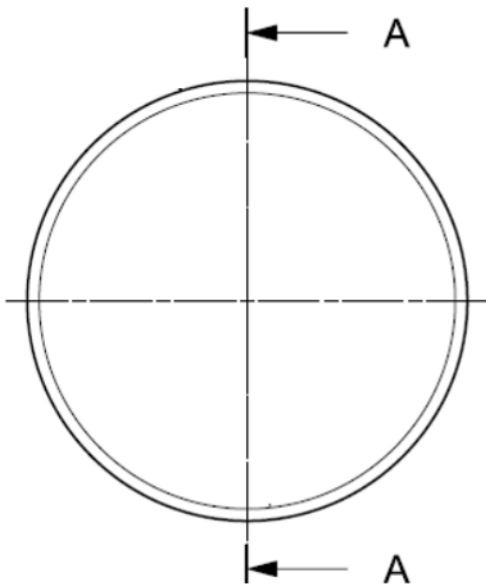


Sizes (Outer diameter)
75 mm
90 mm
110 mm

Pressure Withstanding Capacity
6.0 Kg/sq.cm



RAINY RWH PUSH-N-LOCK HDPE END CAP



75 mm
90 mm
110 mm

Pressure Withstanding Capacity
6.0 Kg/sq.cm

To ensure absolute compliance with its established quality control policies, RAINY PUSH-N-LOCK HDPE PIPING SYSTEMS undergo a host of tests, as listed.

TESTS PERFORMED

Raw material

- Base density
- Melt Flow Rate
- Thermal Stability (OIT)
- Volatile Matter
- Water Content
- Anti-Oxidant
- HDPE Resin LTHS
- Rapid Crack Propagation Test

Pipes : Geometric Characteristics

- Visual Appearance
- Maximum out of squareness at pipe ends
- Length Inspection
- Mean Outside Diameter
- Ovality
- Wall Thickness

Pipes : Performance (Acceptance Tests)

- Internal Pressure Creep Rupture Test (Acceptance)
- Reversion
- Melt Flow Rate
- Oxidation Induction Time
- Density
- Elongation at Break
- Marking

Pipes : Performance (Type Tests)

- Internal Pressure Creep Rupture Test of Pipe
- Internal Pressure Creep Rupture Test of Pipe Joint
- Overall Migration
- Slow Crack Growth Rate

Fittings

- Workmanship / Visual Appearance
- Dimensions
- Hydraulic Proof Test / Internal Pressure Creep Rupture Test
- Density
- Melt Flow Rating



CONTACT US

Factory and Head Office



Address

No. 269/1, Hadihalli Village, Amble Hobli,
Malalur Gram Panchayat, Malalur Post
Chikmagalur Taluk and District - 577133
Karnataka State, India



Phone

+91-7338033790
+91-8722154444



Email

farmland_ckm@yahoo.com



Website

www.rainyfilters.com

Marketing Office



Address

No. 648, 11th Cross, 7th Block,
Jayanagar, Bangalore - 560070,
Karnataka State, India



Phone

+91-9449443232
+91-9448130524



Email

farmland_ckm@yahoo.com



Website

www.rainyfilters.com